

Gates Professional Tools are perfect for the job:

Gates professional Stretch Fit[™] installation tools are application specific.

Some of Gates tools are universal, and currently our tools cover more than 80% of the current Stretch Fit[™] applications. Gates professional tools are robust and designed to make the installation quick and easy for the fitter.

Gates professional tools are superior in design:

- Safer - The professional Stretch Fit[™] tools are application specific and prevent the risk of damaging the belt on installation.
- Easy to use – Gates can provide step by step installation instructions to ensure the fitter has the correct information to install the belt accurately the first time.
- Re-useable – Gates professional tools are an investment, they are suitable for use over and over.



Stretch Fit installation tool part numbers SFT001 and SFT003 (pictured) are general purpose tools that cover over 80% of the Stretch Fit applications globally. Stretch Fit installation tool part number SFT002 is a specifically designed tool for Ford Fiesta/Focus models.

Gates offers complete support to get the job done right.

- Detailed, easy-to-follow installation instructions are printed on the inside of each belt sleeve and will be available on the Gates website (www.gatesaustralia.com.au), along with installation tips.
- For a quick overview, an Installation Training Video is available online at www.gates.com/stretchfit - just click on the link to the video
- If you require any additional information or assistance, you can simply contact the Gates Customer Service Team on +61 3 9797 9688.

**Are you prepared for the
NEW Belt Technology?**



Don't risk it, fit the best, fit Gates.



Driving Solutions That Move You Forward.

**New Stretch Fit Drive Systems Demand New Solutions...
We have the first & Only Answer:**

Gates Micro-V® Stretch Fit™ Belts

More and more car manufacturers are now bringing vehicles into the market that are NOT equipped with an accessory drive belt tensioning device. Instead, these vehicles use specially engineered self-tensioning drive belts. These belts are unique and also require special tools for installation.



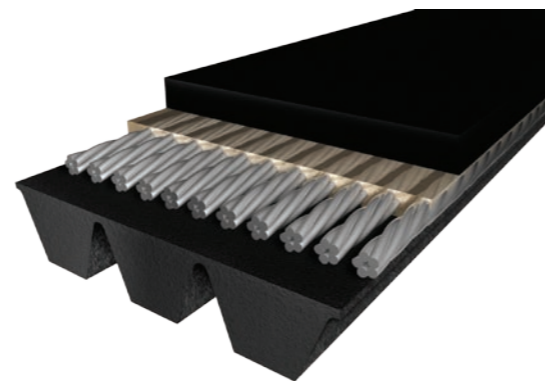
Gates have worked closely with car manufacturers globally to develop and release the very first self-tensioning belt designed exclusively for Stretch Fit applications. Gates Stretch Fit™ belts are engineered to fit and perform perfectly on these unique drive systems and are the ideal solution for the Australian and New Zealand aftermarkets.

Prior to installation, Stretch Fit belts are shorter than the actual working length, but once they have been properly installed (using special tools) they automatically tension to ensure optimum load-carrying capacity and proper tension over the life of the belt.

Standard Micro-V belts should never be used on these accessory drive systems as they will not perform and will fail prematurely.

Introducing Revolutionary Twistlock™ Technology!

- **Patented EPDM Construction**
- **Exclusive Adhesive Formula**
- **Patented Aramid-Reinforced Undercord**
- **Super-Strong, Incredibly Flexible Polyamide Tensile Cord**



On the surface, Stretch-Fit belts may look like standard Micro V belts, but inside they are dramatically different. The secret is in Gates' new Twistlock technology, where the strength and flexibility of the advanced polyamide tensile cord is surrounded by a specially formulated adhesive that literally locks on to the cord allowing it to elongate and stretch but never lose tension.

Gates Stretch Fit belts also incorporate Gates highly engineered and patented EDPM construction, thus making the belts are extremely resistant to oil, leaks, wear and pilling.

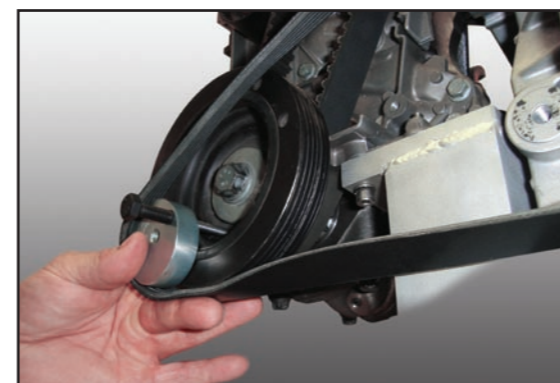
Gates Micro-V® Stretch Fit™ Belts

We've taken our superior OE-Technology to create the FIRST and ONLY aftermarket solution for these vehicle makes and models:

MAKE	MODEL	ENGINE	YEAR	APPLICATION	STRETCH FIT BELT PART NUMBER	INSTALLATION TOOL REQUIRED
CITROEN	C4	1.6L 4 Cyl. (DV6ATED4) Turbo	2005-07	Alt. W/out AC	6PK780SF	SFT001
				Alt. With AC	6PK1090SF	SFT001
FIAT	STILO	1.6L 4 Cyl. (182B6000)	2002-04	AC	4PK917SF	SFT001
FORD	FIESTA	1.6L 4 Cyl. (FYJ)	2004-On	Alt. With AC	6PK1019SF	SFT002
				PS	5PK692SF	SFT003
FORD	FOCUS	1.6L 4 Cyl. (FYJ)	2004-05	Alt. With AC	6PK1019SF	SFT002
		2.0L 4 Cyl. (1999cc)	2005-On	PS	5PK692SF	SFT003
MAZDA	3	2.0L 4 Cyl. (LF) 16v	2004-09/2004	AC With Man. Trans.	5PK692SF	SFT001
		2.0L 4 Cyl. (LF) 16v	10/2004-On	AC With Man. Trans.	5PK692SF	SFT001
		2.0L 4 Cyl. (LF) 16v	10/2004-On	AC With Auto. Trans.	5PK716SF	SFT001
PEUGEOT	307	1.6L 4 Cyl. (DV6ATED4) Turbo	2004-On	Alt. W/out AC	6PK780SF	SFT001
				Alt. With AC	6PK1090SF	SFT001

Stretch Fit Tools for installation:

Belts for Stretch Fit drive systems do not have a tensioner, and therefore require unique installation with proper tools. If the right tools are not used, the belt can be damaged.



Continued >