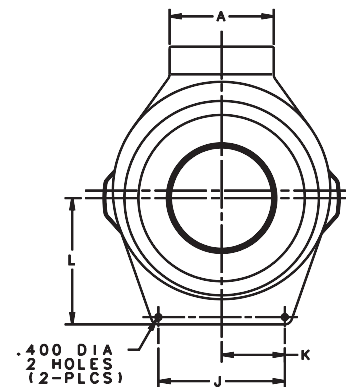


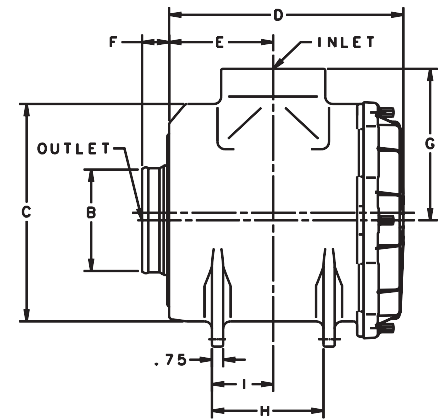
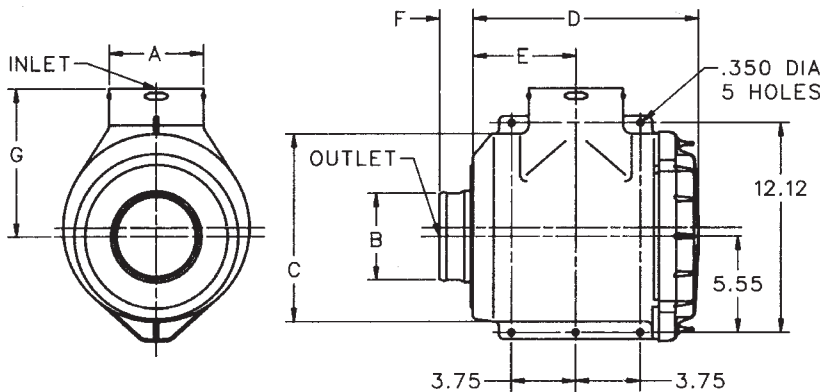


11" Model Shown

13" & 15" Models



11" Models



EPG Specifications

Part Number	Body Diameter (C)		Inlet Diameter (A)		Outlet Diameter (B)		Length (D)		(G)		Outlet Length (F)		(E)	(H)	(I)	(J)	(K)	(L)						
	in	mm	in	mm	in	mm	in	mm	in	mm	in	mm	in	mm	in	mm	in	mm						
G110119	10.86	276	5.50	140	5.00	127	12.89	327	8.56	217	1.95	50	6.00	152	see above drawing for dimensions									
G110120	10.86	276	5.50	140	5.00	127	12.89	327	8.56	217	1.95	50	6.00	152	for 11" models									
G130079	12.62	32	16.00	152	5.00	127	16.02	407	9.51	242	3.00	76	5.66	144	7.75	197	2.00	51	8.00	203	4.00	102	6.00	152
G130089	12.62	32	16.00	152	5.00	127	16.02	407	9.51	242	3.00	76	5.66	144	7.75	197	2.00	51	8.00	203	4.00	102	6.00	152
G150048	14.62	37	17.00	178	7.00	178	15.75	400	10.19	259	1.82	46	7.00	178	7.50	191	4.12	105	8.50	216	4.25	108	8.00	203
G150049	14.62	37	17.00	178	7.00	178	15.75	400	10.19	259	1.82	46	7.00	178	7.50	191	4.12	105	8.50	216	4.25	108	8.00	203

EPG Service Parts

	G110119	G110120	G130079	G130089	G150048	G150049
Cover	P529151	P529151	P533916	P533916	P523096	P523096
Fastener Kit	X006452	X006452	X006452	X006452	X006452	X006452
Primary Filter	P527484	P527484	P533930	P533930	P527682	P527682
Primary Filter (ES/HE)	EAF5067	EAF5067	-	-	EAF5069	EAF5069
Safety Filter	P527680	P527680	P533890	P533890	P527683	P527683
Thumb Screw	P527435	P527435	P527435	P527435	P527435	P527435

NOTES:

- * Standard primary filter shipped with air cleaner initially.
- * Safety filter is designed to fit G110119, G130079, G150048. This was not originally shipped with the filter (note that adding a safety filter will decrease the maximum airflow throughput)

Initial Restriction

Airflow	Model No.
Models with Primary Filter Only	
625 cfm @ 4.25" H ₂ O	G110119
650 cfm @ 6" H ₂ O	G130089
800 cfm @ 5.5" H ₂ O	G150049
Models with Primary & Safety Filter	
450 cfm @ 5.5" H ₂ O	G110120
950 cfm @ 8" H ₂ O	G130079
1325 cfm @ 10" H ₂ O	G150048