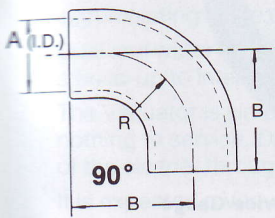


Moulded Rubber Adaptors

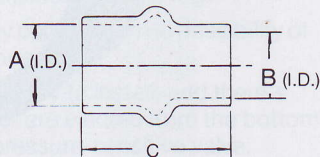
The recommended air intake system is one assembled with moulded rubber adaptors, quality hose clamps and aluminium or steel tube. A sound air intake system may be readily achieved in this manner which can:

- compensate for misalignment;
- absorb destructive vibrations;
- reduce intake noise levels;
- replace a complex "cut and weld" procedure by a simple "cut tube to length" and "clamp rubber adaptor" process.
- achieve a lower restriction system — the smooth surfaces and constant radii of rubber elbows and reducers offer much lower flow resistance than welded mitred elbows and convoluted rubber hose.

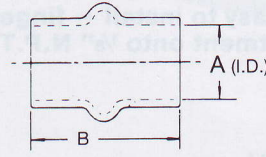
NOTE: Dimensions in Inches



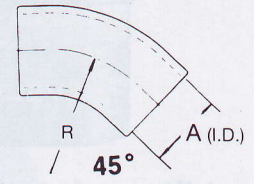
90° Elbow



Hump Reducer



Straight Hump



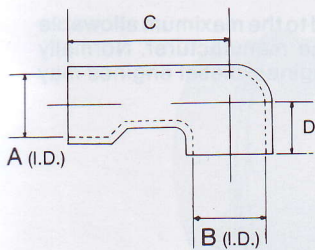
45° Elbow

	A	B	R
P10-5529	2	3½	2
P10-5530	2¼	3¾	2¼
P10-5531	2½	4	2½
P10-5532	3	5	3¼
P11-4318	3½	5½	4
P10-5533	4	5¾	4½
P11-3733	4½	5½	3½
P10-7844	5	6	4½
P10-5534	5½	6¾	4¾
P10-5535	6	7	5
P10-5536	7	7¾	5¾
P11-2605	8	8½	6½
P11-4314	10	10½	8½

	A	B	C
P10-2820	3	2½	4½
P10-1290	3½	3	5
P10-1291	4	3	5
P10-1292	4	3½	5
P10-1293	5	4	5¾
P10-1891	5½	4	5¾
P10-3516	5½	5	5¾
P11-2611	6	5	6
P10-1294	6	5½	6
P12-6530	7	5½	7
P11-2610	7	6	5½
P12-9660	8	5½	7
P11-4315	8	6	5½
P11-2609	8	7	6
P11-2607	10	8	6

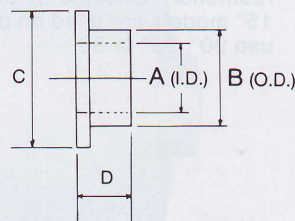
	A	B
P10-5608	3	5¼
P11-4319	3½	5¼
P10-5609	4	5¼
P11-4317	4½	6
P10-5610	5	6
P10-5611	5½	6
P10-5612	6	6½
P10-5613	7	6½
P11-2608	8	5
P11-1414	10	6

	A	R
P10-5541	2	2
P10-5542	2¼	2¼
P10-5543	2½	2½
P10-5544	3	3¼
P10-9331	3½	3½
P10-5545	4	3¾
P11-4316	4½	3½
P10-9021	5	4½
P10-5546	5½	4¾
P10-5547	6	5
P10-5548	7	5¾
P11-2606	8	6½
P11-4313	10	8½



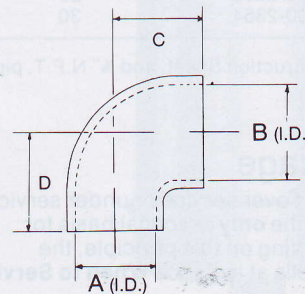
90° Flat Type Special Elbow

	A	B	C	D
P90-0355	2½	2¼	3¼	1
P90-0357	3	3	5¼	2
P90-0360	5	4	8¼	3½



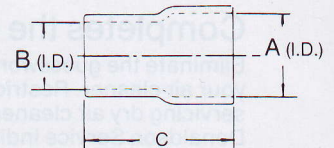
Reducing Sleeves

	A	B	C	D
P90-0350	4½	5	5½	1½
P90-0351	5	6	6½	1½
P90-0352	5½	6	6½	1½



90° Reducing Elbow

	A	B	C	D
P90-0356	2¾	3	5½	5½
P90-0358	3	4	4½	3½
P12-3462	3	3½	3¼	3½
P90-0367	5	6	4¾	4¾
P11-7724	5½	6	6¾	6¾
P90-0369	5½	6	4¾	5



Reducer

	A	B	C
P10-4087	2	1½	2½
P10-2948	2	1¾	2½
P10-4088	2¼	2	2½
P10-4089	2½	2	2½
P10-4090	2½	2¼	2½